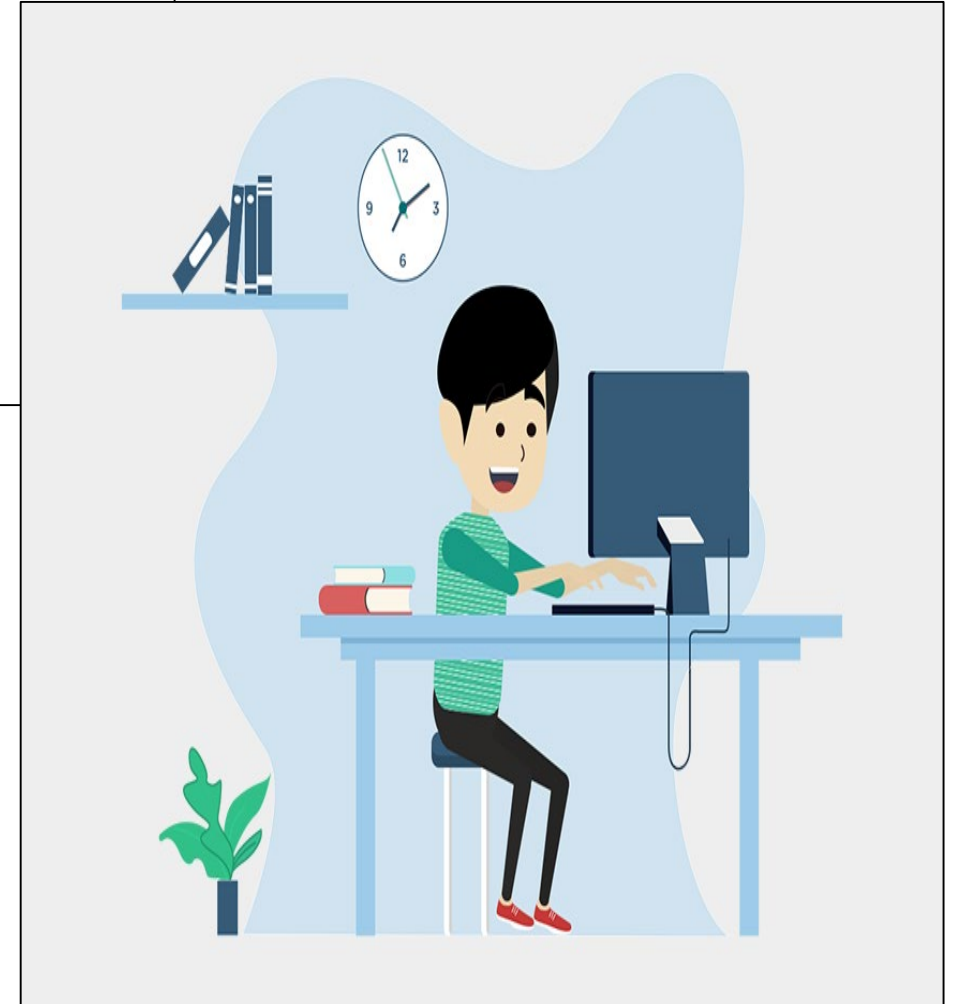


# Check-in Reading & Numeracy assessment.



The Department of Education has organised two online tests in **reading** and **numeracy**.

Partly, this is because schooling has recently been interrupted by COVID-19, and it is more important to keep track of skills.

The tests will both have 40-45 multiple-choice questions, and both take about 50 minutes.

In the future, it is likely that these tests will be **held fairly often, in Years 7 to 9.**

Log-in will be by typing in a web address, then entering two codes.

This number will be put on the board, for you to copy.

**CY5T3 2020 Student Code**

<https://student-check-inuat.cese.nsw.gov.au>

|             |                      |
|-------------|----------------------|
| First Name: | Perrie               |
| Last Name:  | Edwards              |
| Birth Date: | 26/02/2007           |
| School:     | Check-In Test School |
| Year:       | 5                    |
| Roll Class: | T3CHECKY5            |

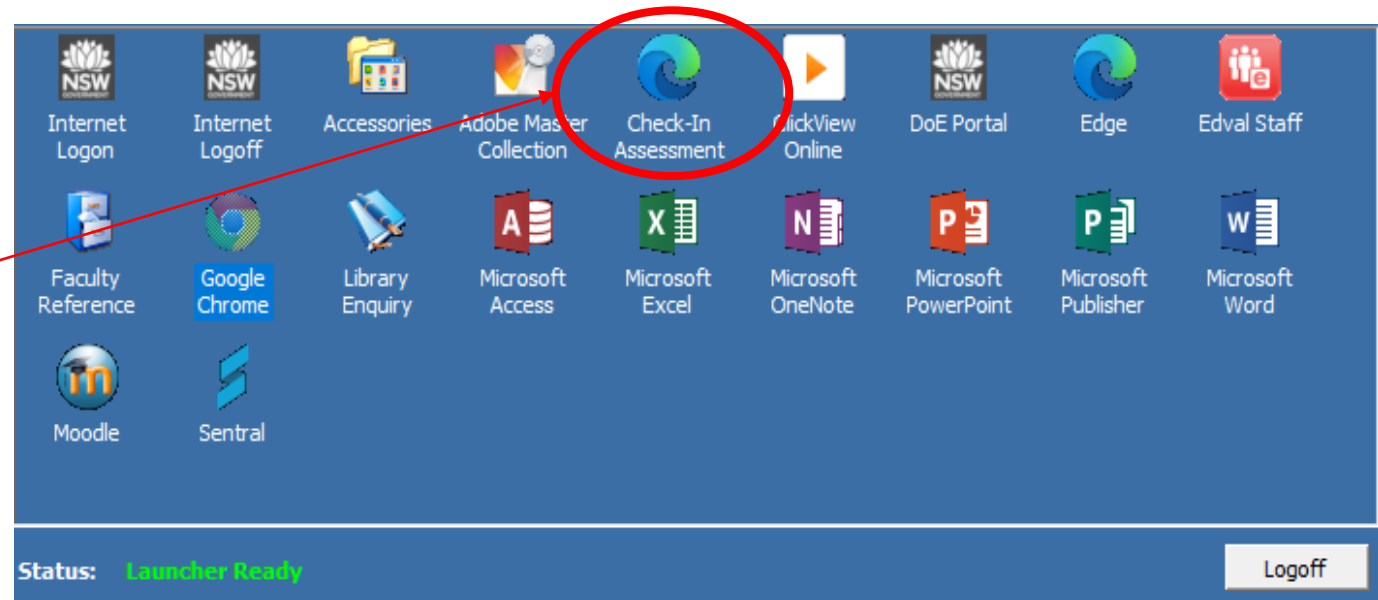
| Assessment          | Student Code |
|---------------------|--------------|
| CY5T3 2020 Numeracy | KF-XX-DW-BT  |

This number will be printed for you on a log-in card.

Plug in headphones (either yours, or the ones supplied) into the computer, and adjust the volume.

An even easier log-in shortcut can be used, from the launcher.....

Click on this icon, to go straight to your test log-in.



Each page will look something like this....

Magnifier

Audio (only for numeracy)

Clock (shows time passed)

Progress summary

Back, next and flag buttons.




The screenshot shows a user interface for a training module. At the top, there is a dark teal header bar containing a magnifying glass icon, a timer showing 00:03, a 'Hide time' button, a 'Training Numer...' label, and 'Question 4 of 5'. Below the header is a progress bar with a volume icon and a '0:00 / 0:12' indicator. The main content area is split into two columns. The left column contains the text 'This is Merrin's birthday cake.' and an image of a grey birthday cake with white stars and the text 'Happy Birthday Merrin'. The right column contains the question 'What fraction of Merrin's cake has been eaten?' and four radio button options: 'one eighth', 'one quarter', 'one third', and 'one half'. At the bottom, there is a light blue navigation bar with 'Back', 'Flag', and 'Next' buttons, each with a red plus icon.

At the end of the test, you will come to this page...

Only click this button when you are sure you are finished.

The screenshot shows the end of an assessment interface. At the top, there is a dark teal header with a search icon, a timer showing 00:01 (Hours: Mins), a 'Hide time' button, and the text 'Question 3 of 3'. On the right side of the header, it says 'Training Literacy traininglit'. Below the header, a white box contains the message: 'You have reached the end of the assessment. To check your answers, click a question number below. If you are ready to finish the assessment, click *Finish*.' Below this is a 'Progress summary' section with four buttons: 'Show all' (with a grid icon), '0 Answered' (with a dark green background), '3 Not answered' (with a grey background), '0 Not read' (with a grey background), and '0 Flagged' (with a red flag icon). Underneath is a 'Questions' section with the instruction 'Click a number to go to that question.' and three buttons labeled '1', '2', and '3'. At the bottom, there is a teal bar with a 'Back' button on the left and a 'Finish' button on the right. A red arrow points from the 'Finish' button in the screenshot to the text box on the left.

### Are you sure you want to finish the assessment?

-  There are 5 items that have not been completed.
-  There are 0 items that have been flagged for checking.
-  You have completed 0 items of the 5 items in the assessment.

No - go back

Yes - finish

You need to bring with you to the tests.....

- headphones, if you prefer your own
- a pen

You must not have any...

- printed materials
- calculators
- mobile phones or smartwatches
- blue-tooth headphones



These tests will give important information about things you are good at,  
and areas you need more support....

...so bring your best effort.